

Field Notes Bulletin

TECHNICAL SUPPORT

FNN 10021 • ISS 07SEP10

Signature: SIGA-CR Modules Connected to MR Series Multivoltage Control Relays

Introduction

This bulletin informs you of an issue with SIGA-CR modules connected to MR Series Multivoltage Control Relays, and tells you how to resolve it.

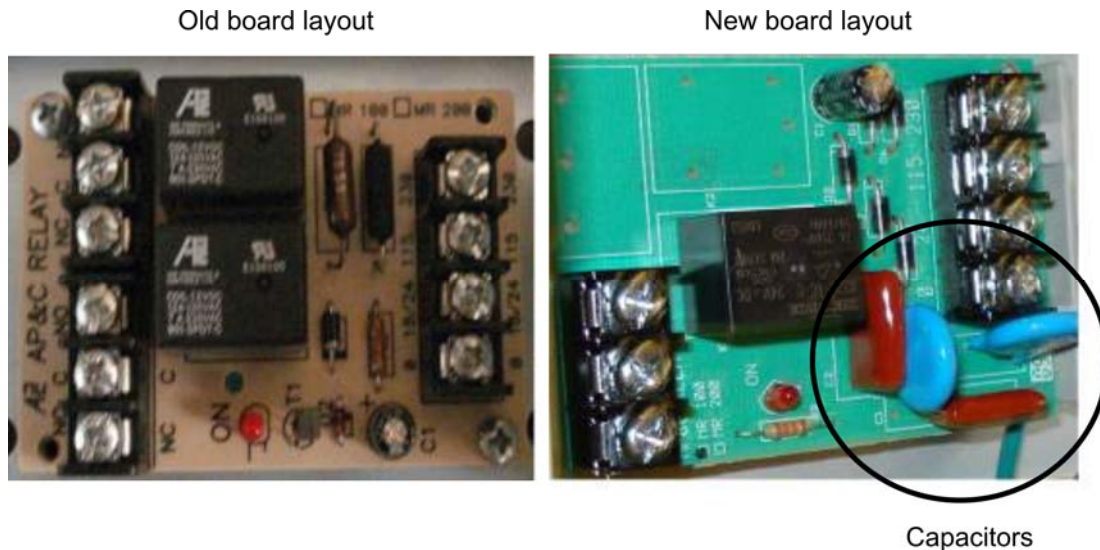
Issue

Due to a change by Air Products, the 120 VAC input circuits on MR-100, -200, and -800 Series Multivoltage Control Relays present a capacitive load to the SIGA-CR, instead of a resistive load. As a result, the SIGA-CR contacts do not reliably change state when activated, even though the red “Active” LED turns on and it activates a relay confirmation event. SIGA-CR activation is not affected when using the 24 V input control voltages on the control relay.

Figure 1 on page 2 shows the difference between new board layouts (with capacitors) and old board layouts (without capacitors). We are attempting to find out when Air Products changed their product design. Until then, use Figure 1 on page 2 to determine if this change affects you.

Note: Other Signature modules that have contacts rated for 120 VAC at 500 mA, Pilot Duty (inductive or resistive loads only) may also be affected. Typically, the SIGA-CR module is used in this type of application. In addition, other control relays such as the PAM-1 may be affected.

Figure 1: Old and new MR Series Multivoltage Control Relays



Solution

If you are using SIGA-CR modules to transfer 120 V in order to energize MR Series Multivoltage Control Relays, determine if the MR Series Multivoltage Control Relays have capacitors as shown in Figure 1. If they do, we recommend that you do one of the following:

- Eliminate the MR Series Multivoltage Control Relay by controlling the 120 V directly with the SIGA-CR (provided the load meets the contact ratings for the SIGA-CR).
- Use 24 VDC from the nearest existing power supply to energize the MR Series Multivoltage Control Relay.
- Use 24 VAC to energize the MR Series Multivoltage Control Relay. This requires the addition of a 24 VAC power source that is UL/ULC Listed for fire protective signaling services. Note: If you use this option, the relay will not be energized in the event of a power failure.

At installations where it isn't practical to install a 24 VDC power supply or run new wiring from an existing power source, we recommended using a Model 592 Low Voltage Class 2 Signaling Transformer from Edwards Signaling to step the 120 VAC down to 24 VAC. See Figure 2 and Figure 3 on page 3.

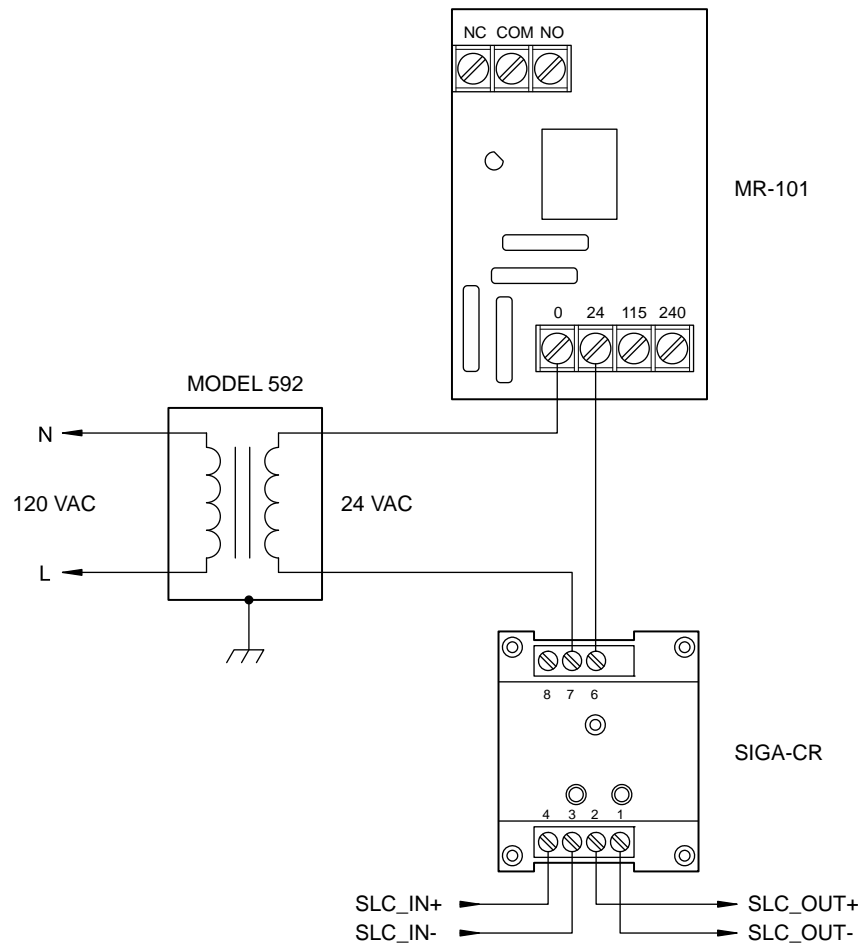
The Model 592 transformer mounts directly onto an MR-101 enclosure. If you need to mount the Model 592 transformer into a two-gang electrical box, you need to use a Model 593 mounting bracket. Both the transformer and the mounting bracket may be purchased through Customer Service.

For more information on the Model 592 Low Voltage Class 2 Signaling Transformer, visit www.edwards-signals.com.

Figure 2: Model 592 transformer mounted onto an MR-101



Figure 3: 24 VAC wiring diagram



Note: The MR Series relay shown in Figure 3 is energized. Activating the SIGA-CR module in this configuration de-energizes the MR Series relay.

For loads with unknown electrical characteristics, or 120 VAC current exceeding 500 ma, we recommend using 24 VAC as the input control voltage.

If you have further questions regarding SIGA-CR applications, please contact Technical Support at the number listed below.

Contacting support

UTC Fire & Security
8985 Town Center Parkway
Bradenton, FL 34202

T (800) 655-4497

F (866) 226-2126

E est.techsupport@fs.utc.com