

ENTRAPASS™ CORPORATE EDITION



High Performance Access Control and Integrated Security System

Release Notes

KANTECH™

DN1524-1003 / Version 4.03

Copyright © 2010 Tyco International Ltd. and its Respective Companies. All Rights Reserved. All specifications were current as of publication date and are subject to change without notice. EntraPass, Kantech and the Kantech logo are trademarks of Tyco International Ltd. and its Respective Companies.

Table of Contents

Purpose of this Document	1
Welcome to EntraPass Version 4.03	1
System Optimization	1
Now Supporting Intellex API 4.3	1
New Firmwares	2
Intrusion Integration	2
Auto-Detect Function	3
Partition Arming Operation Modes	3
User Codes	3
DSC Panels	4
Manual Operations	4
Event parameters Screen	5
Intrusion DLL Support	5
WebStation	6
A WebStation Licence Included in Corporate Edition	6
Defining Schedules	6
Defining an Access Level	8
Variable Date Formats	10
KTES	10
Import/Export Tenant List	10
Setup Wizard	11
KT-400	11
Enhanced Firmware Reload	11
TCP/IP Corporate for IPLink and KT-400 Connection Types	12
FIPS	13
Various Enhancements	13
Backup / Sync with No Interruption	13
Print Graphics with Icons	14
Detailed Card Use Report	15
Input Activated Event	15
SmartLink	16
Hide User PIN	16
Workspaces	17
Security Level Screen	17





Purpose of this Document

This document is intended for installers of the EntraPass Access Control System that are already familiar with the product. Its purpose is to deliver late-breaking information about the EntraPass Corporate Edition Version 4.03. This objective will be achieved by way of contextual screens and simplified descriptions. Please note that this document does not replace the reference manual shipped with the product.

Welcome to EntraPass Version 4.03

Welcome to this latest version of EntraPass integrating a lot of exciting new desktop enhancements. We are introducing new EntraPass functionalities such as the Intrusion Integration, adding new EntraPass WebStation features, the tenant lists Import/Export wizard, as well as various other enhancements.

System Optimization

The following system requirements apply to the EntraPass Server, Redundant Server, Video Vault, Oracle/MS-SQL Interface (CardGateway), Windows Gateway, SmartLink, and Workstation. Make sure that the computer on which you are installing the software meets the following requirements:

- Operating systems: Windows 2000, XP Pro, Server 2003, Server 2008, Vista and Windows 7 Pro 32-bit with their latest Service Packs (**Note**).

NOTE: Only 32-Bit Windows operating systems are supported.

- Processor: Pentium IV at 1.8 GHz
- 1 GB RAM
- Minimum free hard disk space: 20 GB
- Color depth: 24-bit (16 million colors), required for Video Integration only
- Screen resolution: 1024 x 768
- AGP or PCI Express 8X graphics card with 64 MB memory and DirectX 9.0 support
- 48X CD-ROM drive
- Network Interface card: 10/100 Base-T network adaptor

NOTE: For video integration with Vista and Windows 7 operating systems, we highly recommend a dual core or higher processor and, at minimum 2 GB of RAM. Actual requirements may vary based on your operating system and configuration.

Now Supporting Intellex API 4.3

EntraPass 4.03 supports the Intellex 4.3 features and enhancements through the new Intellex API.

New Firmwares

Please take note that all devices firmwares have been updated. The following table indicates the firmware version required for operations with EntraPass v4.03.

Device	Firmware
KT-100	1.09
KT-200	EPROM 2.15
KT-300	1.23
KT-400	1.02
KTES	1.02
Kantech IP Link	1.03

Intrusion Integration

In EntraPass 4.02, the Intrusion Panel was fully accessible through the virtual keypad:



The Entrapass version 4.03 now integrates “Alarm” and “Access” into one transparent united and operable system. Manual operation on the Intrusion components has been added. This new configuration provides full access of the Panel Virtual Keypad directly attached to a KT-400. A pass



through mechanism on the KT-400 links the Panel Manager of the Gateway directly with the Panel's DLL.

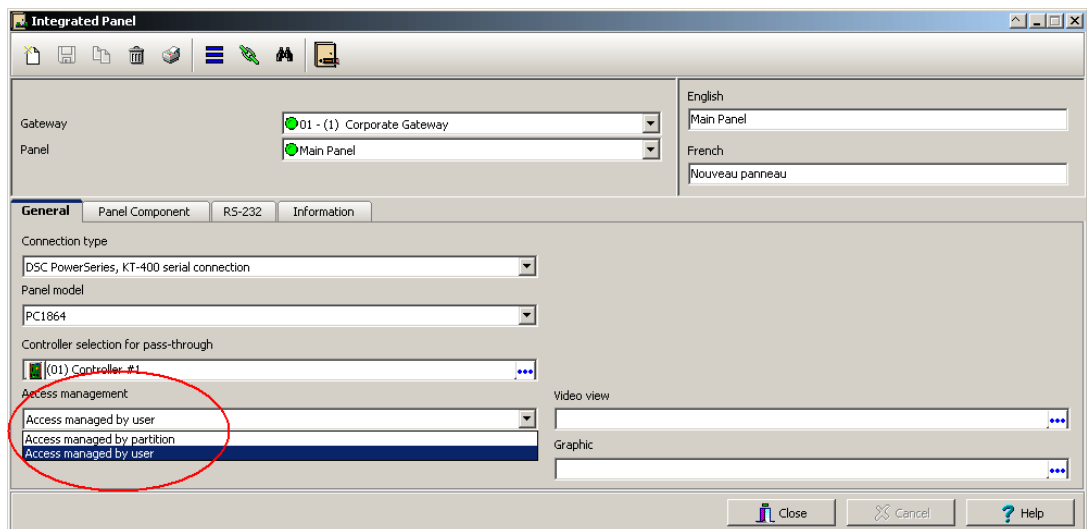


Auto-Detect Function

An auto-detect function has been added in order to retrieve the data (partition and zone labels) directly from the hardware Panel to save time in the provisioning process.

Partition Arming Operation Modes

Two operation modes can now be used to manage partition arming:



- **Managed by partition**

This mode allows only one partition to be associated to a door in order to be armed or disarmed.

- **Managed by users**

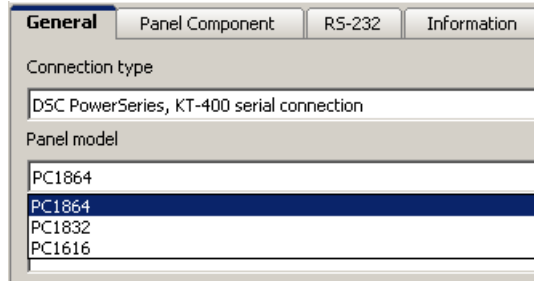
This mode will allow to associate one or more partitions to a door in order to be armed or disarmed. A user would required to have permission, through the door access level and user code in order to arm or disarm the partition (s) associated to the door.

User Codes

User codes can now be imported and managed from Entrapass.

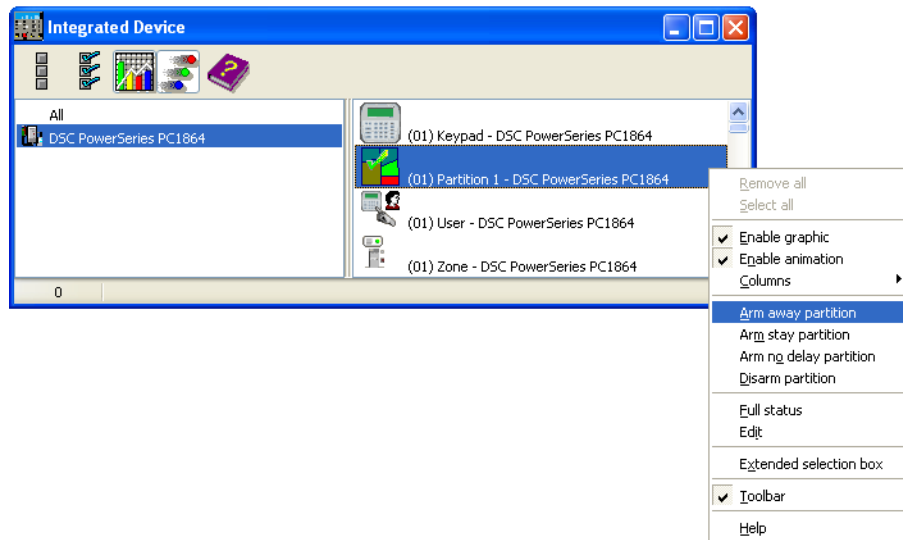
DSC Panels

Three PowerSeries DSC panel models are now available. PC1864, PC1832 and PC1616.



Manual Operations

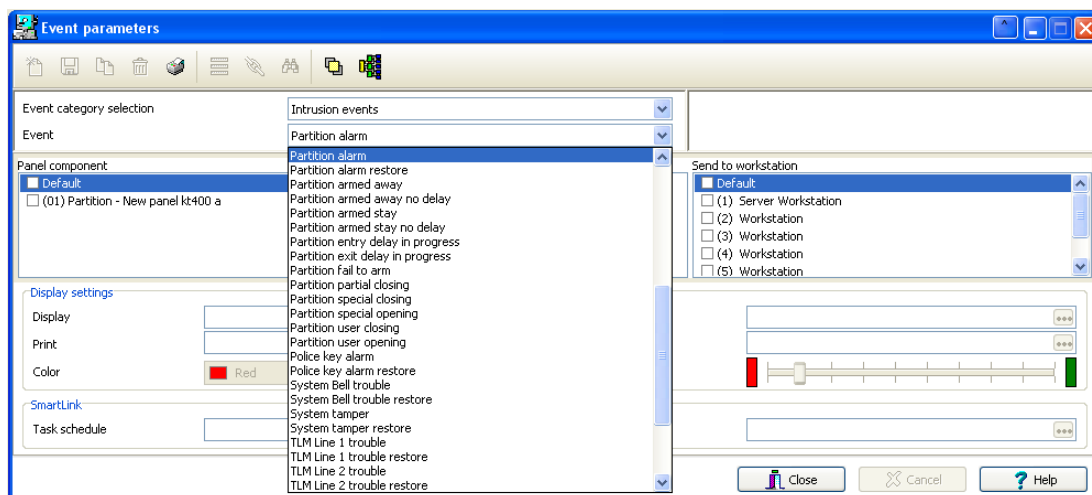
For each of the Intrusion component type, the Integration DLL provides a list of manual operations when right clicking on the graphic or operation screen, such as arming in away mode, arming in stay mode and others.





Event parameters Screen

New Event parameters types have been added to handle most of the Intrusion generic events. For example, the “Partition in alarm” event from partition 1 could be mapped to a Smartlink action:



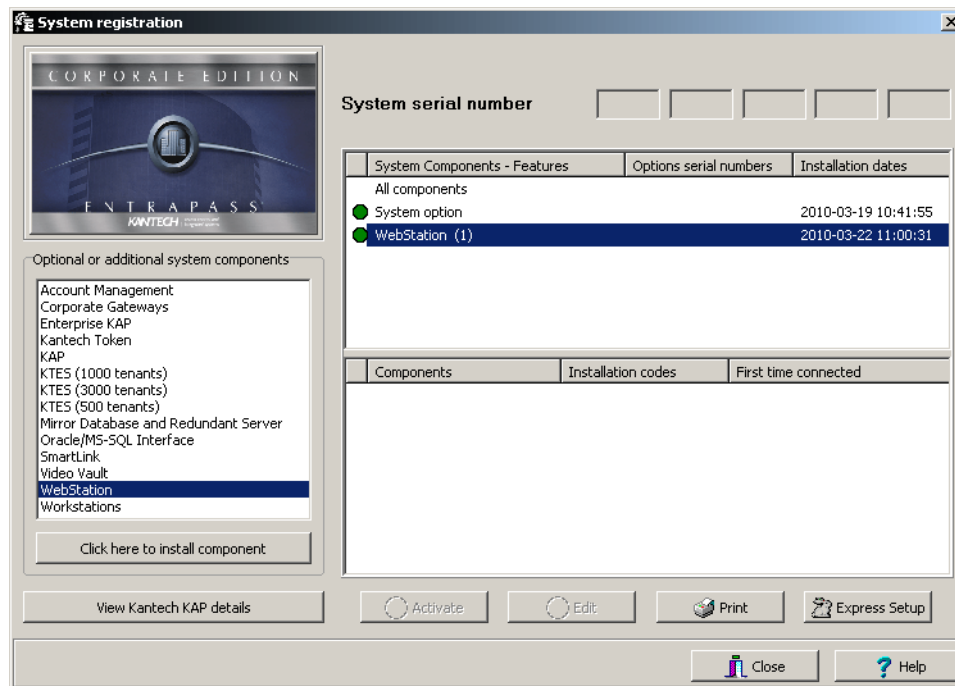
Intrusion DLL Support

In the case where the Intrusion panel is connected directly to a KT-400 board (RS-232 / IP), the intrusion DLL is now linked to the KT-400 firmware. The great advantage of this mechanism, is to be able to update or add Intrusion DLL without having to update the KT-400 firmware.

WebStation

A WebStation Licence Included in Corporate Edition

In EntraPass 4.03, a WebStation connection has been included and can be activated through System Registration:



Defining Schedules

The **Schedule** window allows you to add, modify or delete schedules:

Schedule: Main Schedule

Schedule Name (English): Main Schedule
Schedule Name (French): Horaire principal

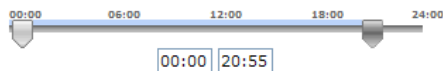
Interval	Sun	Mon	Tue	Wed	Thu	Fri	Sat	Hol1	Hol2	Hol3	Hol4
00:00 - 06:00 06:00 - 12:00 12:00 - 18:00 18:00 - 24:00 00:00 18:45		✓	✓	✓	✓	✓					
00:00 - 06:00 06:00 - 12:00 12:00 - 18:00 18:00 - 24:00 00:00 00:00											
00:00 - 06:00 06:00 - 12:00 12:00 - 18:00 18:00 - 24:00 00:00 00:00											
00:00 - 06:00 06:00 - 12:00 12:00 - 18:00 18:00 - 24:00 00:00 00:00											

Save Save as Cancel Delete Add Schedule



• Modifying

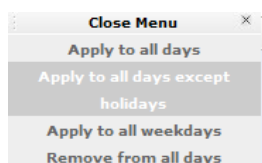
You can modify an interval using the slider:



or enter interval values directly in the corresponding textboxes.

• Actions

Various actions can also be performed on intervals using the contextual menu:



• Holidays

The list of holidays corresponding to a specific type is displayed by hovering the mouse on holiday titles (Hol1, Hol2, etc.):



Defining an Access Level

Access levels can be defined through the WebStation interface.

Access Level | Welcome | Users | Definition | Operation | WebViews | Report | About | Session

Gateway/Site: Access Level Name (English): Access Level Name (French):

Access Level:

Classic View

Door	Schedule
Controller #1 Door #1	Always valid
Controller #1 Door #2	Always valid
Controller #2 Door #1	Always valid
Controller #2 Door #2	Always valid
Controller #2 Door #3	Always valid
Controller #4 Door #1	Always valid
Controller #5 Door #1	Always valid

Click on the **Add Access Level** button and select a schedule for each door controller.

Access Level | Welcome | Users | Definition | Operation | WebViews | Report | About | Session

Gateway/Site: Access Level Name (English): Access Level Name (French):

Access Level:

Classic View

Door	Schedule	
Controller #1 Door #1	<input type="text" value="None"/>	<input type="button" value="Single Update Mode"/> <input type="button" value="Select All"/> <input type="button" value="Unselect All"/>
Controller #1 Door #2	<input type="text" value="None"/>	
Controller #2 Door #1	<input type="text" value="None"/>	
Controller #2 Door #2	<input type="text" value="None"/>	
Controller #2 Door #3	<input type="text" value="None"/>	
Controller #4 Door #1	<input type="text" value="None"/>	
Controller #5 Door #1	<input type="text" value="None"/>	

• Display Modes

Two different display modes are available for the WebStation access levels:



In **Classic** mode, dropdown lists allows you to link schedules to doors. You can choose between the simple modification mode (by default), and the multiple modification mode. In the multiple modification mode, you select (using checkboxes) the items you want to modify.

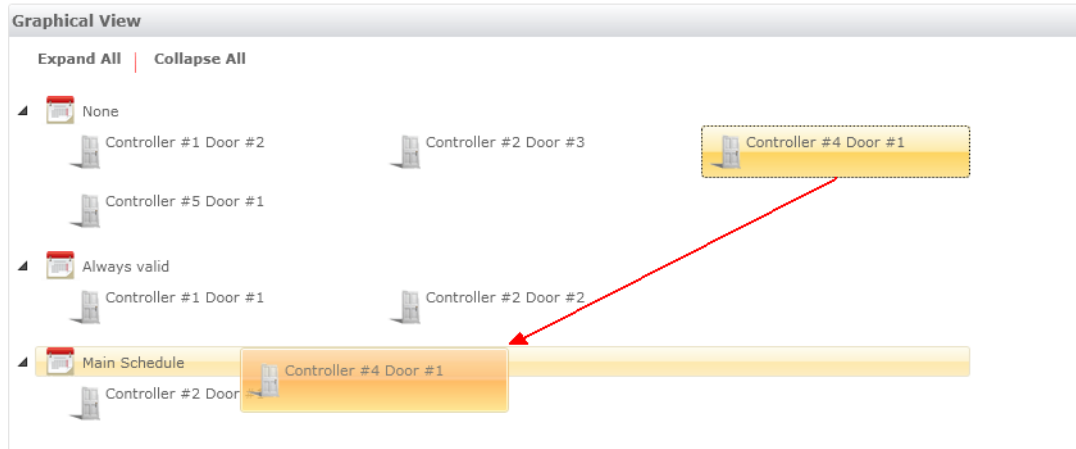
Gateway/Site:	<input type="text" value="Center Building"/>	Access Level Name (English):	<input type="text" value="New access level"/>
Access Level:	<input type="text" value="New access level"/>	Access Level Name (French):	<input type="text" value="New access level"/>



Classic View		
Door	Schedule	<div>Multiple Update Mode Select All Unselect All</div>
Controller #1 Door #1	<input type="text" value="Always valid"/>	<input type="checkbox"/>
Controller #1 Door #2	<input type="text" value="None"/>	<input checked="" type="checkbox"/>
Controller #2 Door #1	<input type="text" value="None"/>	<input type="checkbox"/>
Controller #2 Door #2	<input type="text" value="Always valid"/>	<input type="checkbox"/>
Controller #2 Door #3	<input type="text" value="None"/>	<input checked="" type="checkbox"/>
Controller #4 Door #1	<div><input type="text" value="None"/> <input type="text" value="Always valid"/> <input type="text" value="Main Schedule"/></div>	<input type="checkbox"/>
Controller #5 Door #1	<input type="text" value="None"/>	<input type="checkbox"/>

In the **graphic** mode, use drag & drops to “move” doors to different schedules:

Gateway/Site:	<input type="text" value="Center Building"/>	Access Level Name (English):	<input type="text" value="New access level"/>
Access Level:	<input type="text" value="New access level"/>	Access Level Name (French):	<input type="text" value="New access level"/>



Use the Drag and Drop feature to move doors from one schedule to another. [Hide](#)

You can toggle between these two modes by clicking on the corresponding icon:





• Actions

The following actions can be performed on access levels:

- Adding a new one
- Deleting an Access Level
- Saving an Access Level
- Linking to a schedule
- Linking to a floor group

Variable Date Formats

The WebStation now uses the browser's date formats.

KTES

Import/Export Tenant List

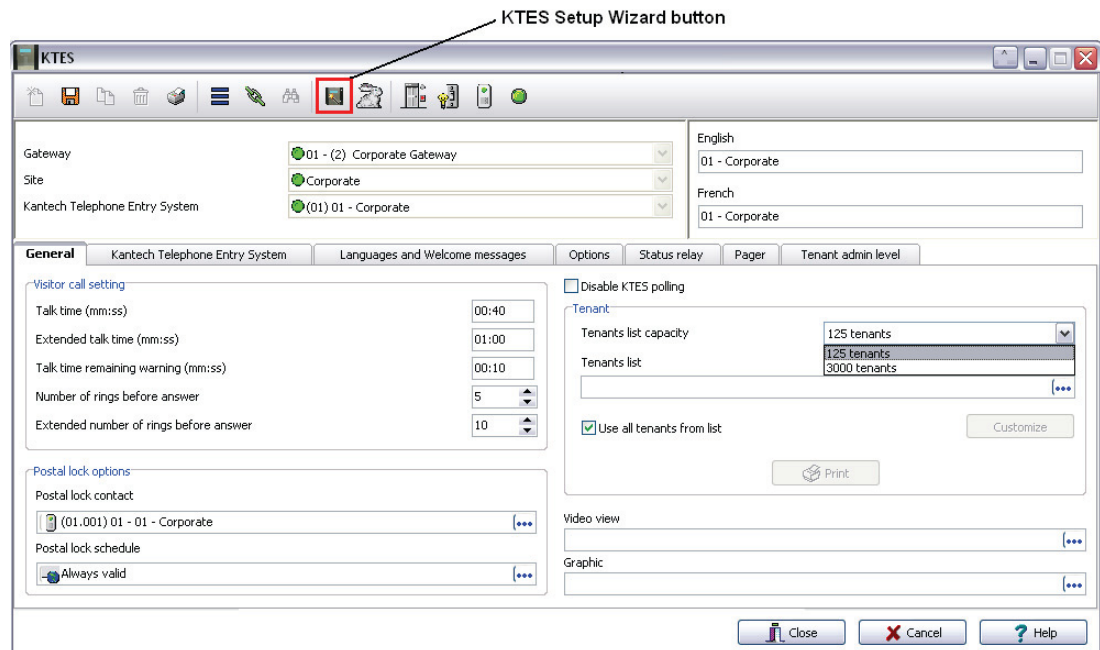
In order to ease the process of importing and exporting tenant lists, an automated procedure has been implemented to guide you through the various steps.





Setup Wizard

Using the new KTES Setup Wizard will help you setup the Kantech Telephone Entry System (KTES) in a few quick easy steps.



KT-400

Enhanced Firmware Reload

- **System Parameters window**

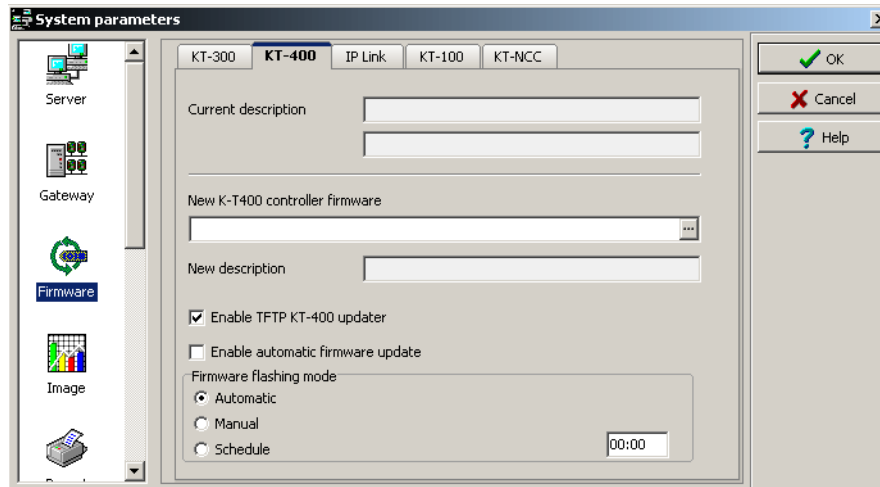
In the Firmware tab of KT-400 System Parameters, the following functions have been added:

Enable automatic firmware update: The EntraPass Gateway will update each KT-400 firmware with a different version.

Firmware Flashing Mode: Determine when the firmware should be updated once downloaded to the KT-400.

- **Automatic:** The firmware is flashed immediately after being downloaded.
- **Manual:** The firmware is flashed manually by the operator from the controller's Operation window.

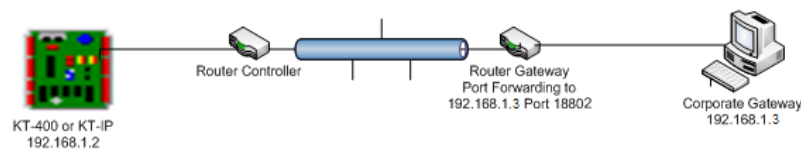
- **Schedule:** The firmware is flashed according to a preselected time.



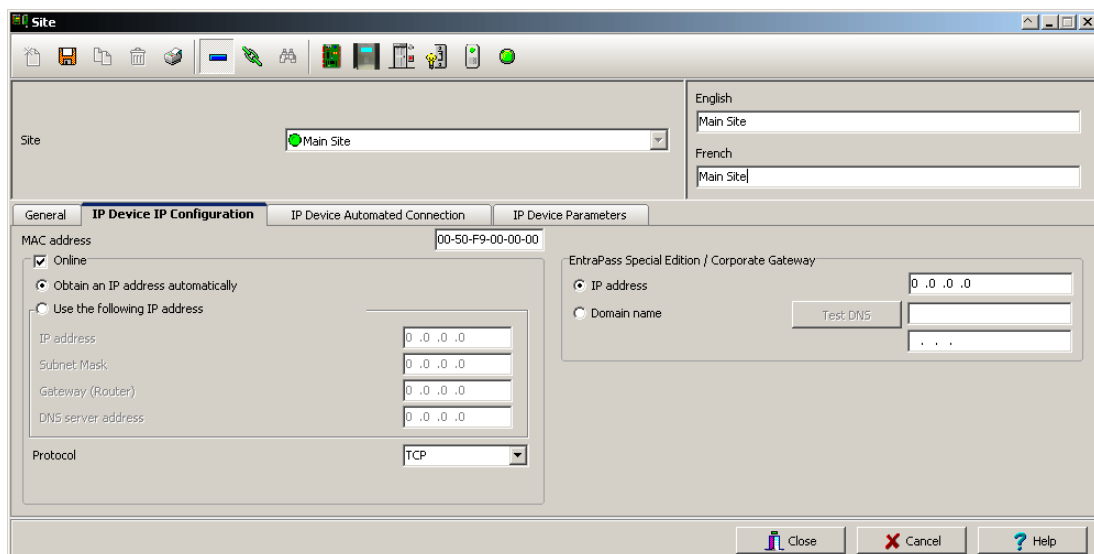
TCP/IP Corporate for IPLink and KT-400 Connection Types

In this version, you can now choose between a UDP or a TCP communication protocol. The main benefit of this improvement is that port forwarding is no longer required at the remote site.

The TCP Protocol:



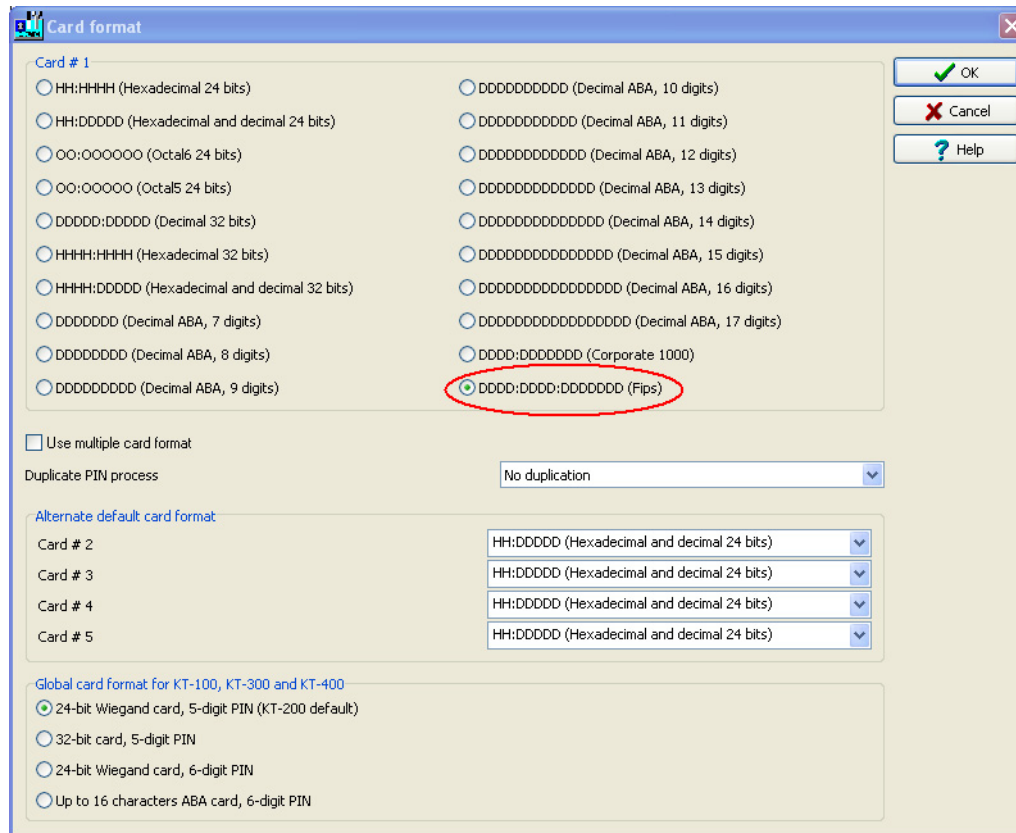
In the Operation menu, you can now choose the communication protocol. In addition, by using the TCP protocol you don't have to select a port.





FIPS

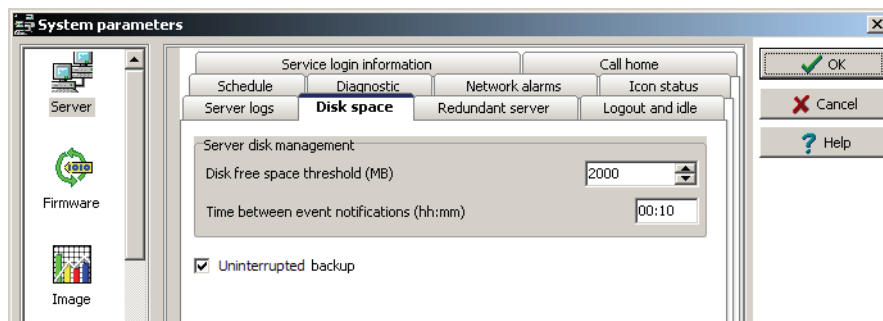
In order to use FIPS cards, a new card format has been added:



Various Enhancements

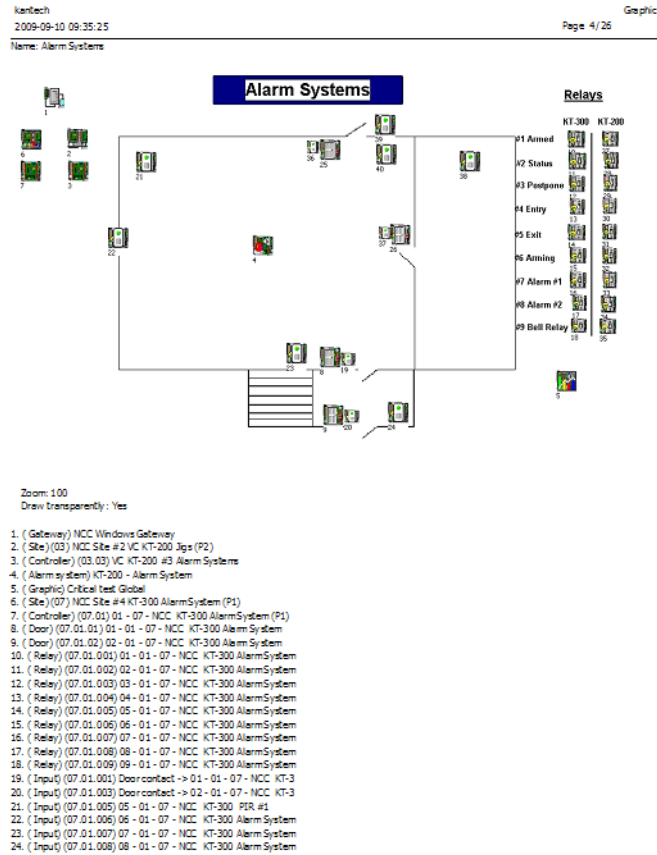
Backup / Sync with No Interruption

In System Parameters, when the Uninterrupted backup option is checked, the main server do not close the tables during the backup/synchronization with the mirror database. Messages can still be received and the database viewed. A yellow icon is then displayed on the left to indicate that the system is in read only mode.



Print Graphics with Icons

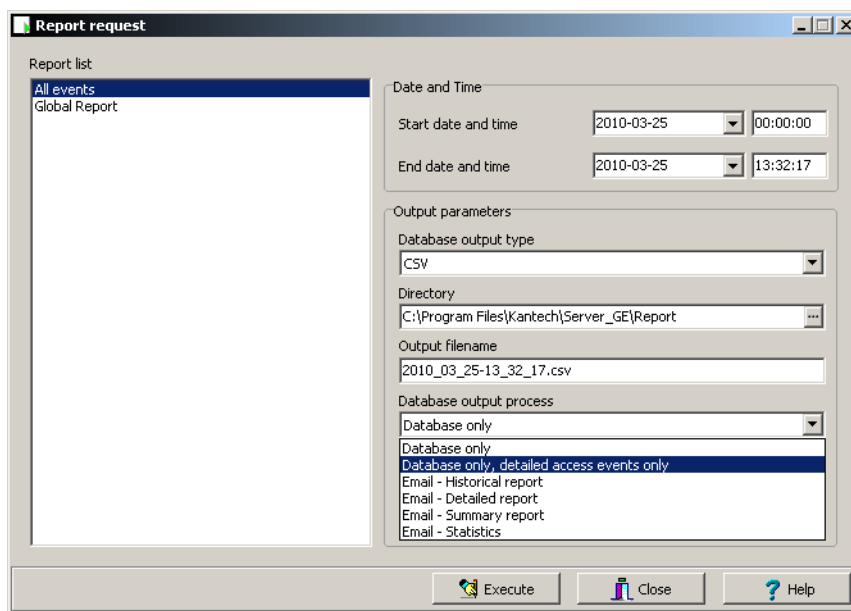
In version 4.03, you can print graphics with the components represented by a distinctive icon. Each component shown graphically on the map is described in the legend below.





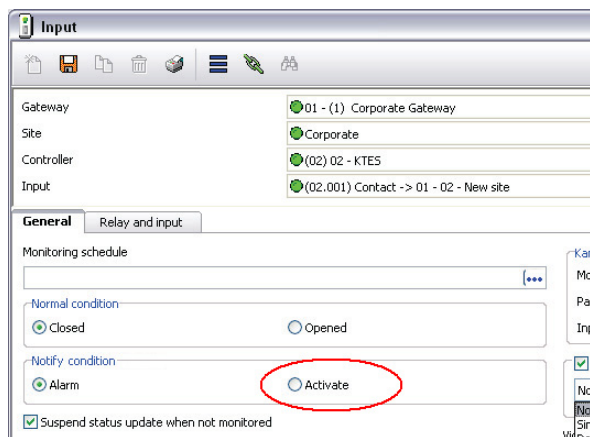
Detailed Card Use Report

Detailed card reports can be created in CSV format. In addition to generated events, this report will include detailed card information:



Input Activated Event

This feature allows the system to generate two different types of messages when a zone is activated. "Input in alarm" will still be sent but also "Input activated" when the input has been designated as such. Also, the message "Input deactivated" will be used instead of "Input restored".



SmartLink

• Batch Operation

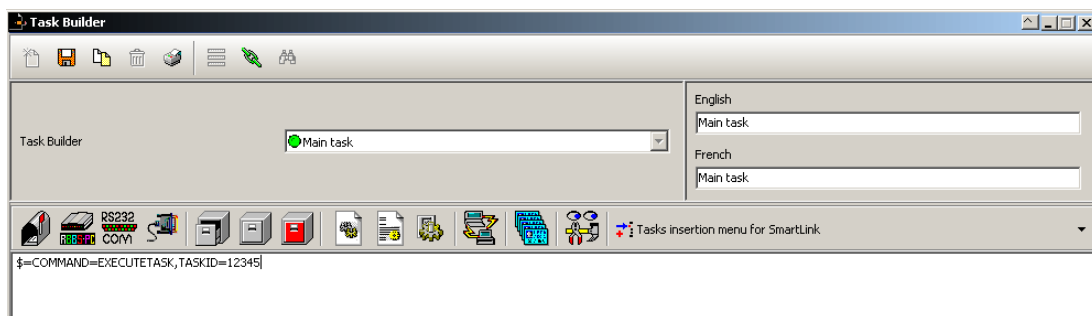
A new command has been added to SmartLink allowing batch modifications to a group of cards. It is now possible to change parameters for a group of cards of the same type. Only the data fields indicated in the command will be modified.

• Execute Macro

Another command has been added to SmartLink to execute a macro function.

Command=EXECUTETASK

TASKID = 12345



NOTE: Please refer to the SmartLink Reference Manual for more information.

Hide User PIN

This function allows you to hide the user PIN by selecting **Hide card holder pin content** in **System > Security level:**

Components physical address

☐ Display on left

☐ Display on right

☐ No display

Miscellaneous

☐ Hide camera over a video view

☒ Hide card holder pin content

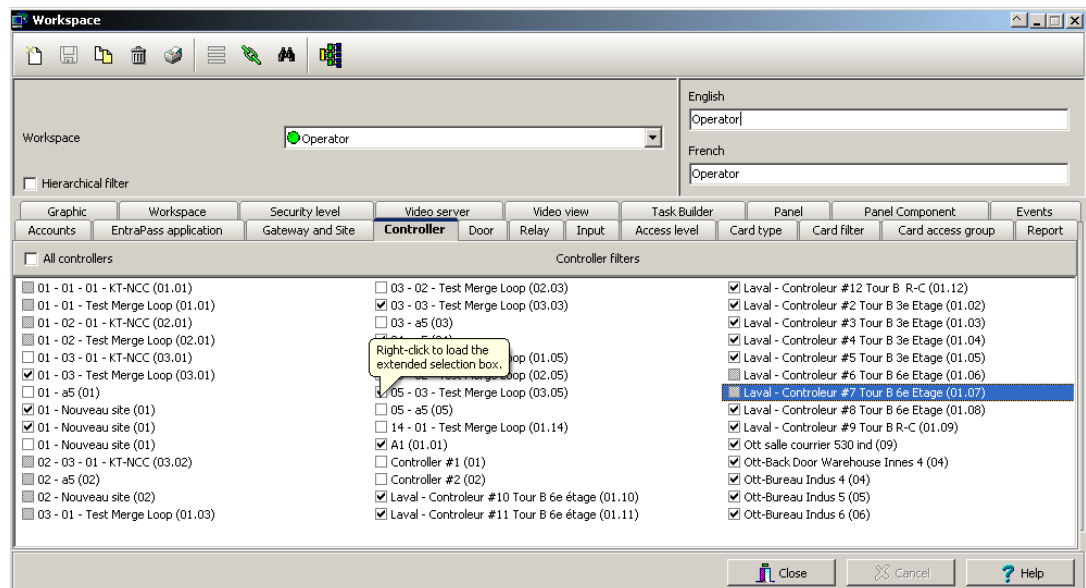


Workspaces

The 'Page control' appearance has been modified to be displayed on multiple lines. In addition, the popup menu that was used to enable the hierarchical filter has been replaced by a checkbox.

An Integration tab (**Panel component**) has been added in Workspace to assign specific panels access or panel components (zone, partitions,...) to an operator. This gives hardware visibility to an operator to activate or deactivate a panel through the operation or graphic screens.

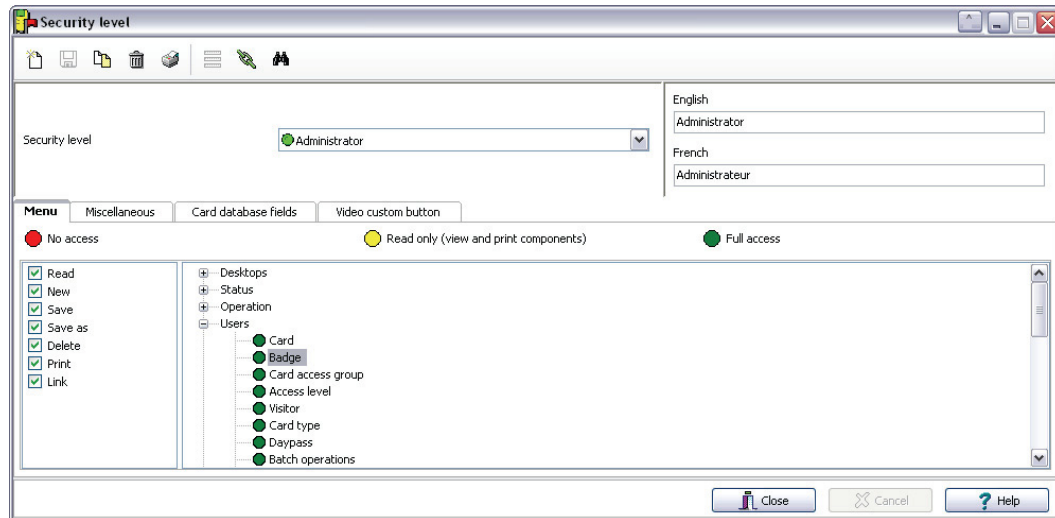
The components with read only access rights are now displayed in grey.



Security Level Screen

Items in the Security Level window are presented in a root tree with all components available for selection. This structure makes it possible to target specific components when granting security level for manual operations. Each security level is identified by a color: full access (green), read only (yellow) and no access (red). The security manager or an operator with appropriate permissions can easily change or assign a component to a lower level security level by double clicking an item until it

changes to the desired color code. Operators will not be able to see items for which they have not been given access



The column on the left gives a list of actions to choose for each selected function on the right:

Read: Give to the current security level the permission to read for the selected function.

New: Give to the current security level the permission to create a new item for the selected function.

Save/Save as: Give to the current security level the permission to save modifications for the selected function.

Delete: Give to the current security level the permission to delete an item for the selected function.

Print: Give to the current security level the permission to print an item for the selected function.

Link: Give to the current security level the permission to link an item for the selected function.

KANTECH[™]

© 2010 Tyco International Ltd. and its Respective Companies. All Rights Reserved.
www.kantech.com
DN1524-1003
